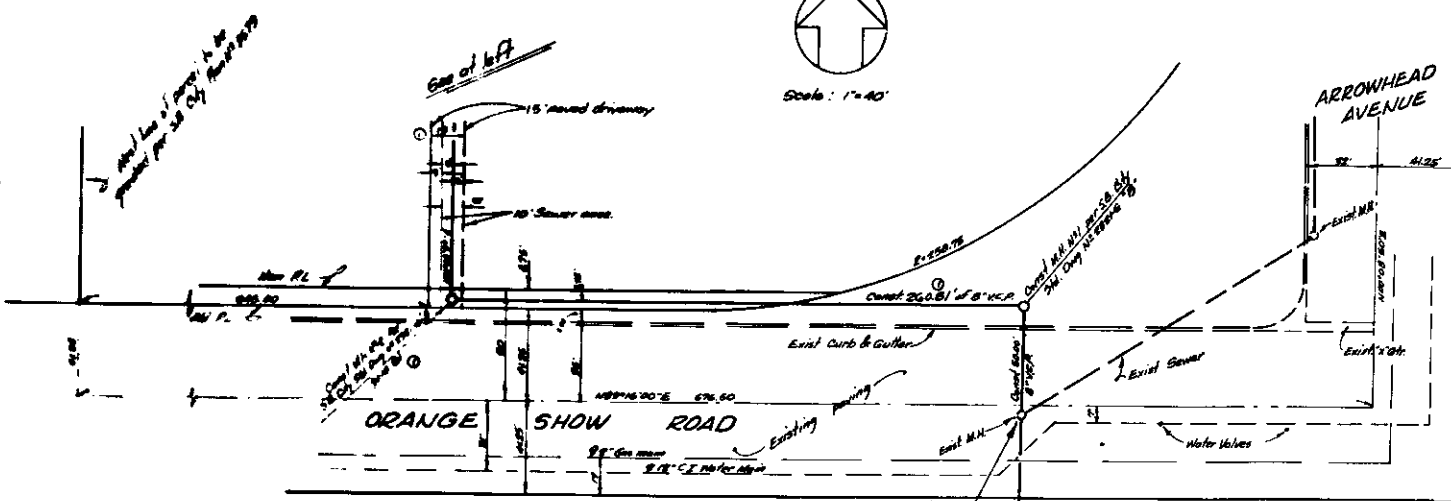
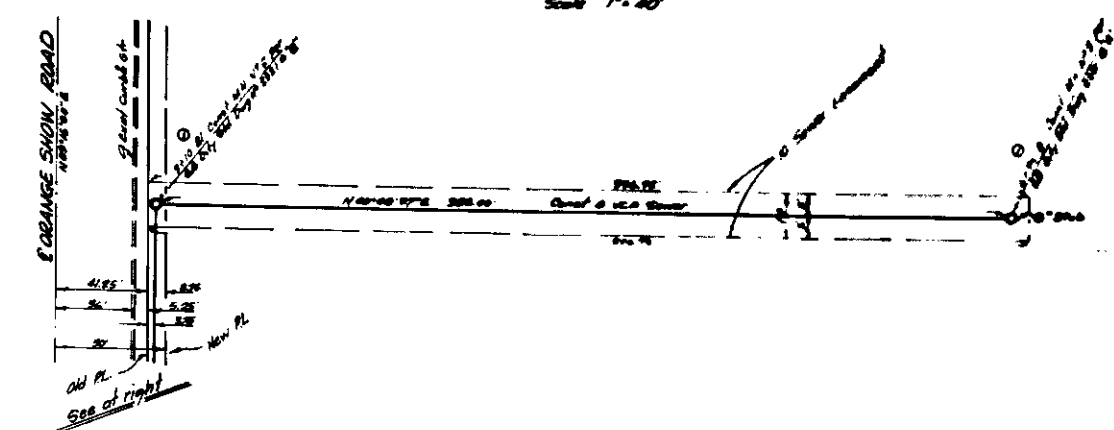
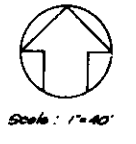


SCALE: 1"=40' HORIZ. 1"=4' VERT.



GENERAL NOTES:

1. All work embodied on these plans shall be done in conformity with applicable provisions of Specifications No. 2271, (Revised in October, 1966) and 2272.
2. Sewer mains shall be constructed of "Wedge-Lock", "Speed-Seal" or "Band-Seal" pipe.
3. Wyes shall be located in the field.
4. Manhole steps shall not be required. Manhole frames and covers shall be Althabra Foundry N/A-1170 or approved equal.
5. BENCH MARK: Brass Disc in top of conc. post 0.85 mile North of Conc. Bridge over Santa Ana River 40' East of E 2nd Street. Elevation 976.79. T.B.M. Set Man Spike in RR #1187621, located 363' SE of M.H. No. 2. Elevation 988.45.
6. A field check and search of available records shows no underground utilities, except those shown on this plan. Contractor is cautioned to exercise due care during construction, to prevent damage to existing lines or to any lines not of record and not shown on this plan.

DEPARTMENT OF ENGINEERING
CITY OF SAN BERNARDINO

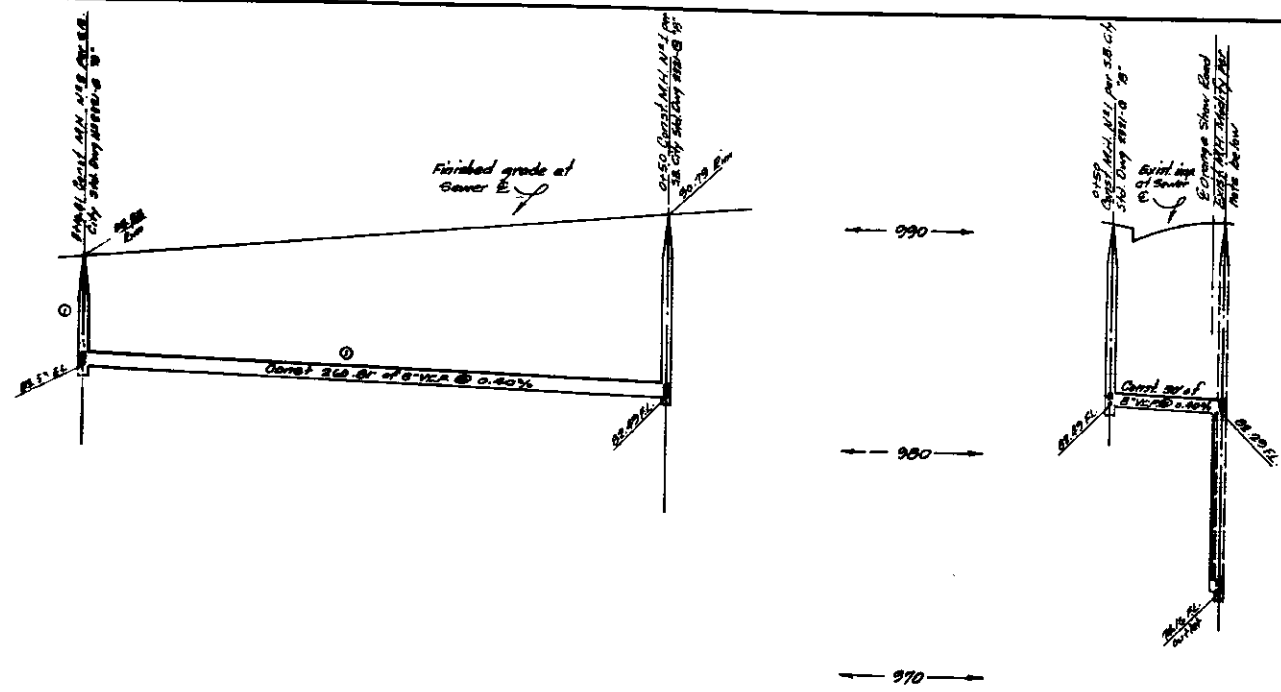
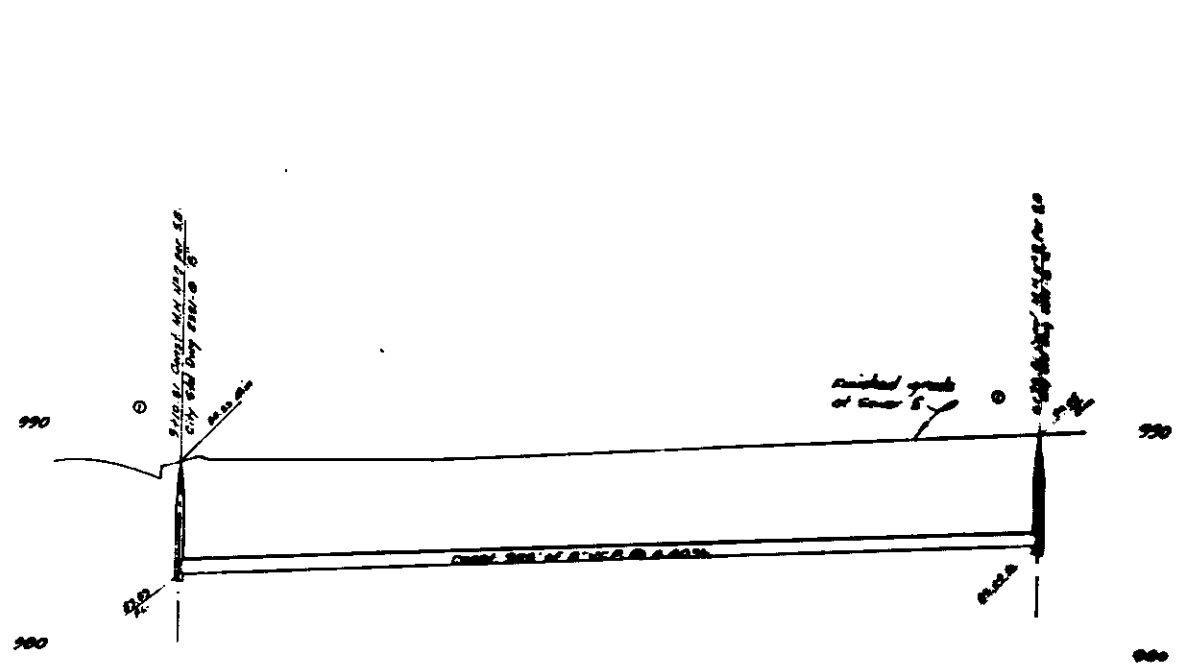
SEWER PLAN
In Orange Show Road and a Sewer Easement near Arrowhead Avenue

SUBMITTED BY:
CAMPBELL, MILLER & ASSOCIATES
Civil Engineering, Planning & Surveying

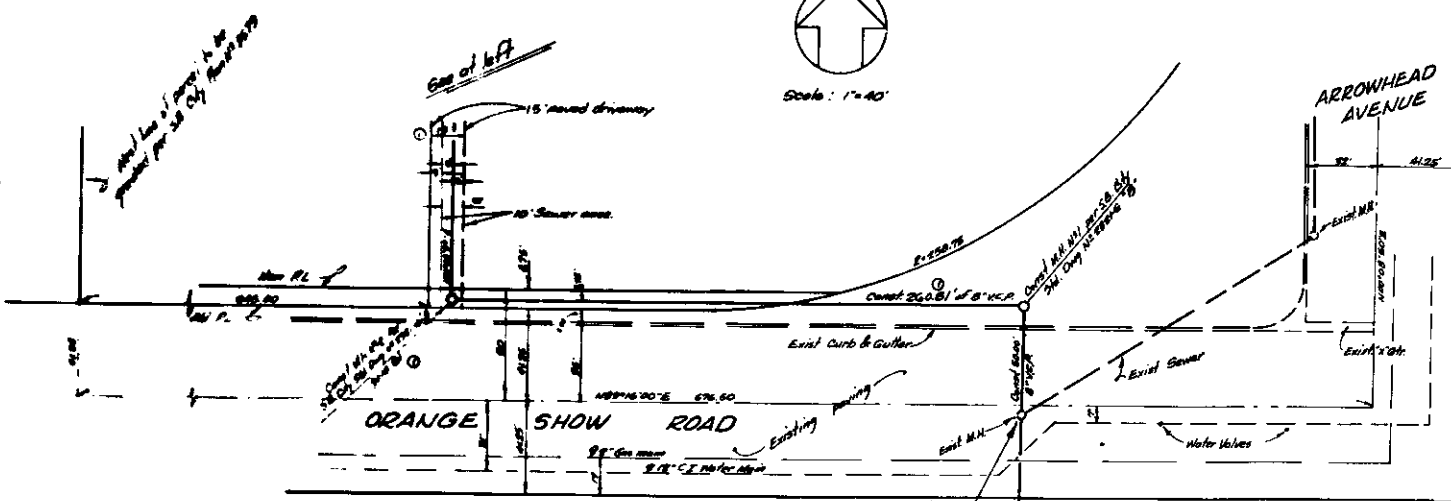
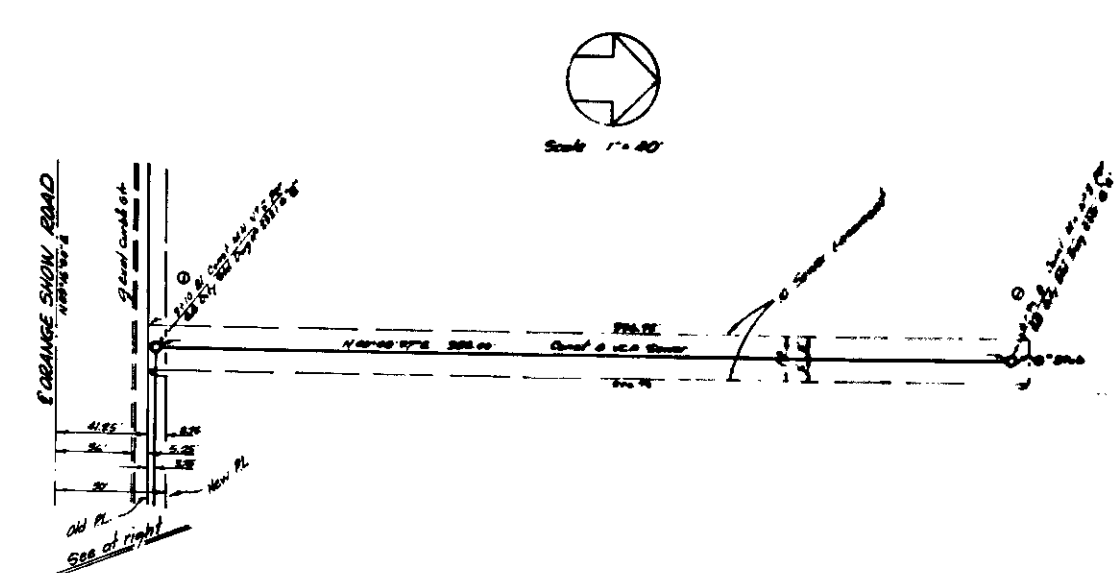
Revised sewer easement location, sewer length, M.H. size and elev. as necessary.
Revised approved: [Signature] 3/16/67
City Engineer REG. 15653

DRAWN BY: [Signature]
CHECKED BY: [Signature]
DATE: 3-11-67

APPROVED: [Signature]
DRAWING NO. 3593



SCALE: 1"=40' HORIZ. 1"=4' VERT.



GENERAL NOTES:

1. All work embodied on these plans shall be done in conformity with applicable provisions of Specifications No. 2271, (Revised in October, 1966) and 2272.
2. Sewer mains shall be constructed of "Wedge-Lock", "Speed-Seal" or "Band-Seal" pipe.
3. Wyes shall be located in the field.
4. Manhole steps shall not be required. Manhole frames and covers shall be Althabra Foundry No. A-1170 or approved equal.
5. BENCH MARK: Brass Disc in top of conc. post 0.85 mile North of Conc. Bridge over Santa Ana River 40' East of E. 2nd Street. Elevation 976.79
T.B.M. Set Man Spike in RR #1187621, located 363' SE of M.H. No. 2. Elevation 988.45
6. A field check and search of available records shows no underground utilities, except those shown on this plan. Contractor is cautioned to exercise due care during construction, to prevent damage to existing lines or to any lines not of record and not shown on this plan.

DEPARTMENT OF ENGINEERING
CITY OF SAN BERNARDINO

SEWER PLAN
In Orange Show Road and a Sewer Easement near Arrowhead Avenue

SUBMITTED BY:
CAMPBELL, MILLER & ASSOCIATES
Civil Engineering, Planning & Surveying

Revised sewer easement location, sewer length, M.H. size and elev. as necessary.
Revised approved: [Signature] 3/16/67
City Engineer REG. 15653

DRAWN BY: [Signature]
CHECKED BY: [Signature]

APPROVED: [Signature] 3-11-67
DRAWING NO. 3593